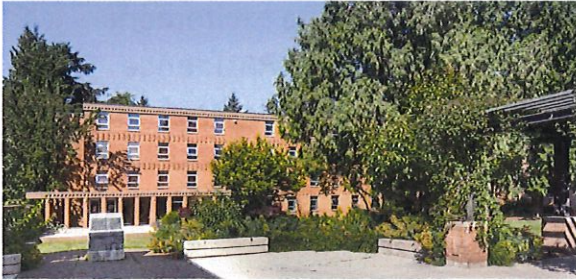


Totem Park Residence



Surrounded by nature with the excitement of the city nearby, Totem Park Residence features affordable guest rooms in a safe and comfortable environment — a great place for your guests to stay, learn and play!

Private + Shared Bedrooms

JULY - AUGUST

Our most economical accommodation, Totem Park Residence is the ideal choice for sports teams, tour groups and school trips.

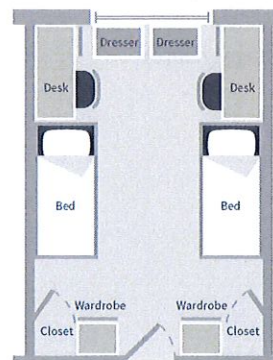
Totem Park Residence is located in a natural setting at the southwest corner of campus, and consists of ten 6-storey brick buildings. Each floor has a mixture of single and twin bedrooms with shared hallway washrooms and a lounge complete with TV, fridge, sink and microwave. There is limited housekeeping service. Catered functions and meetings can be hosted on site in the Totem Ballroom or one of the several lounges available for booking.

This residence is equipped with elevators. Laundry facilities and pay phones are available in each house. Breakfast is included in the daily rate and full meal plans are available for larger groups. Totem Park Cafeteria can accommodate up to 600 people for breakfast, lunch or dinner and is open seven days a week.

Onsite playing fields and ample lawns surround Totem Park. The Thunderbird Park and Sports Complex — with two ice arenas, two gyms and tennis centre is a short walk from the residence.

Each floor accommodates approximately 36 guests.

850 BEDS



Totem Park Residence *həm'ləsəm' + q'ələxən*



Surrounded by nature with the excitement of the city nearby, Totem Park Residence features affordable guest rooms in a safe and comfortable environment — a great place for your guests to stay, learn and play!

Semi-private Bedrooms **JULY - AUGUST**

Totem Park Residence is located in a natural setting at the southwest corner of campus. Completed in 2011, the contemporary *həm'ləsəm'* and *q'ələxən* houses offer semi-private single bed units with wired (ethernet) internet access, a work desk, dresser and open closet, and a washroom shared with the adjacent room.

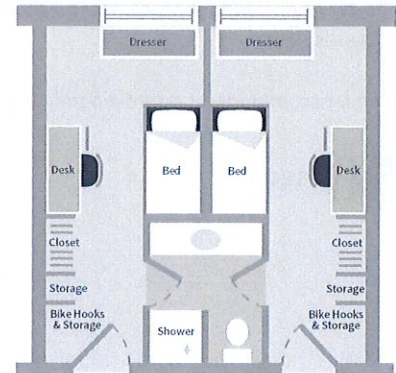
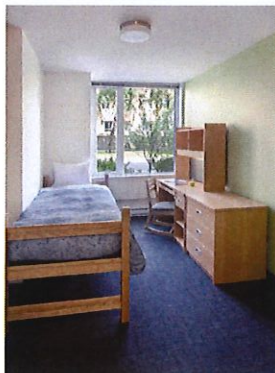
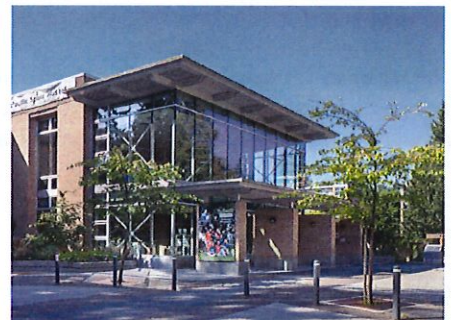
These six storey buildings are equipped with elevators, laundry facilities, and floor lounges each equipped with a TV, fridge, sink, and microwave. Housekeeping service includes beds made upon arrival, as well as towels & soap. Meal plans are available at the Totem Park Cafeteria.

Each house features a House Lounge suitable for catered events and social gatherings. The grounds offer plenty of field space for outdoor activities and barbecues. The Commonsblock offers additional meeting rooms and a ballroom for larger meetings.

Onsite playing fields and ample lawns surround Totem Park. The Thunderbird Park and Sports Complex — with two ice arenas, two gyms and tennis centre is a short walk from the residence.

*Each floor of the *həm'ləsəm'* and the *q'ələxən* houses accommodates 34 to 52 guests.*

543 BEDS



Place Vanier Residence



Surrounded by nature and located in the northwest section of UBC's spectacular campus, Place Vanier Residence features affordable guest rooms in a safe and comfortable environment — it's the perfect place for your guests to stay, learn and play!

Private + Shared Bedrooms

MAY-AUGUST

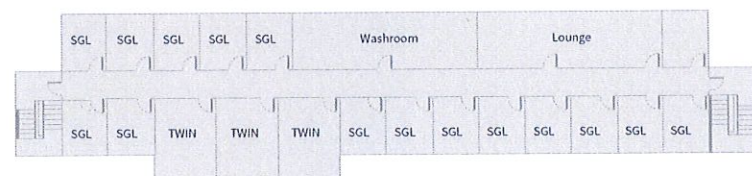
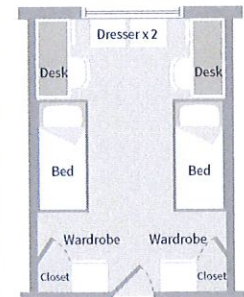
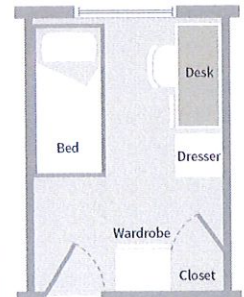
Our most economical type of accommodation, Place Vanier Residence is the ideal choice for sports teams, tour groups, and school trips. Place Vanier, the University's original student residence, consists of ten 4-storey brick buildings located at the northwest side of campus, adjacent to the Nitobe Japanese Garden.

Each floor has a mixture of single and twin private bedrooms with shared hallway washrooms and floor lounges that include a TV, fridge, sink, and a microwave. Free WiFi is available in the residence lobby. In-room high speed Internet, parking and on-site laundry are available for a fee. Basketball courts, tennis courts and playing fields are all nearby.

Social spaces and meeting rooms are available for rental upon request. Please ask about our meal plan offers at the Place Vanier Dining Room. Each floor accommodates approximately 24 guests.

Korea House and Tec de Monterrey are Place Vanier's newer houses. Each house has six floors, with three stairways and a central elevator. Guests are accommodated in single bedrooms with two washrooms on each floor, as well as a lounge area with TV, fridge, sink, and microwave. Each floor accommodates approximately 30 guests.

Limited housekeeping service (linen provided, folded on bed upon arrival) is included. Housekeeping level upgrades are available for an additional fee.



1,200 BEDS

Orchard Commons



Orchard Commons, completed in 2016, features contemporary design and stunning views. Located towards the south side of campus, it offers semi-private units (two rooms share a bathroom), and multi-level floor lounges.

Shared Accommodation

JULY-AUGUST

SEMI-PRIVATE BEDROOM UNITS

Located in the 20-storey Orchard Commons, two private bedrooms are connected to one shared washroom. Each bedroom includes a single bed, a work desk and WiFi. Multi-level floor lounges offer seating, TV, fridge, sink and microwave. There are approximately 25-50 guests per floor. Buildings are equipped with elevators. Housekeeping service includes beds made upon arrival.



487 UNITS

EACH UNIT ACCOMMODATES TWO PEOPLE

Private Suite

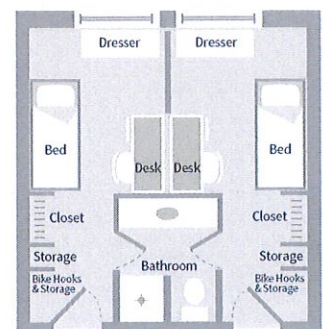
JULY-AUGUST

STUDIO SUITES

Located in the 20-storey Orchard Commons, Studio Suites are identical to the Semi-Private Units and feature a private washroom (no sharing). Each unit also includes a single bed, work desk and WiFi. Multi-level floor lounges offer seating, TV, fridge, sink and microwave. Buildings are equipped with elevators. Housekeeping service includes beds made upon arrival.

65 SUITES

EACH SUITE ACCOMMODATES ONE PERSON



Gage Signature Studio



The Gage Signature Studios, completed in 2021, features contemporary design and stunning views. It offers modern private studios in a comfortable, naturally beautiful campus setting. It is the perfect home-away-from-home for travelling, working and playing!

Private Studio

YEAR ROUND

SIGNATURE STUDIO - 233 SQ FT -

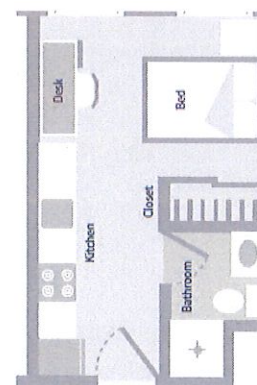
Located in the 8-storey *qəltələməcən lələm* building, each studio has a queen bed, work desk, telephone, WiFi, air conditioning, private washroom with shower, and an equipped kitchenette. Your in-room coffee maker includes complimentary tea and premium coffee.

140 UNITS

EACH UNIT ACCOMMODATES UP TO TWO PEOPLE (SEP - APRIL)

196 UNITS

EACH UNIT ACCOMMODATES UP TO TWO PEOPLE (MAY - AUG)



*Reference only, not exactly as shown.

ORCA MEETING ROOM - 700 SQ FT -

The Orca meeting room is a modern, state of the art room, located on the ground floor of the new *qəltələməcən lələm* (Orca House). The meeting room has a ceiling mounted HD projector and motorized projection screen, recessed into the ceiling. Audio is provided by overhead ceiling speakers, audio inputs are 3.5MM and HDMI.

The light and airy meeting room boasts floor to ceiling windows, and is ideal for small meetings or intimate receptions.

CAPACITY

16 BOARDROOM
16 CLASSROOM
50 RECEPTION

RATE

\$325 / 4 HOURS
\$400 / 8 HOURS
\$450 / 24 HOURS



West Coast Suites



Located in the heart of the spectacular UBC campus, the West Coast Suites offer comfortable, well-appointed private suites. They are ideal for guest speakers and special guests.

Hotel Suites

YEAR ROUND

Come experience the University of British Columbia's stunning Point Grey Campus, home to some of Vancouver's best trails and beaches. Enjoy the natural beauty of Pacific Spirit Park and take advantage of the Aquatic Centre, University Golf Club, UBC Tennis Centre, the Museum of Anthropology, the Nitobe Japanese Garden, the Rose Garden and more.

Explore shops and restaurants on West 10th Avenue, and other attractions on Vancouver's West Side. Located just 20 minutes from downtown Vancouver or the Vancouver International Airport, UBC provides guests with a perfect retreat within the city.

The West Coast Suites are located in a 3-storey building next to the Walter Gage Residence, in the vibrant northern part of campus. Our beautifully appointed air conditioned suites feature a king-size bed as well as a queen size sofa bed in the living room, fully equipped kitchen, air-conditioning, flat-screen TV, telephone with complimentary local calls, WiFi, in-room safe, private washroom, and a balcony.

Your in-room coffee maker includes complimentary tea and premium coffee. Daily housekeeping is provided. On-site parking is offered for a discounted price.

47 SUITES

EACH SUITE ACCOMMODATES
UP TO FOUR PEOPLE

